

## Bolster Plate

Fig. 1

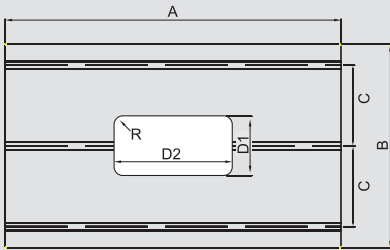
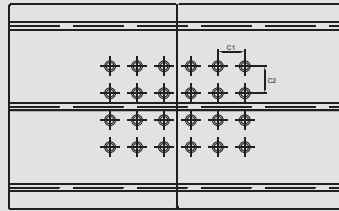
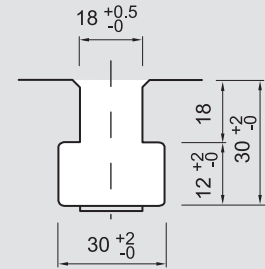


Fig. 2

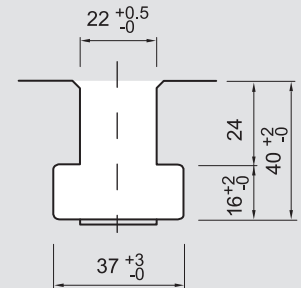


## T Slot

AT type

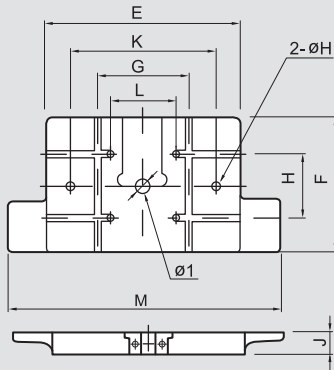


BT type

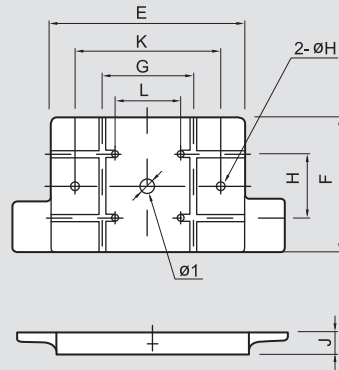


## Slide Plate

PC1 16-110( Insert type)



PC1 160-260



	A	B	C	C1	C2	D1	D2	E	F	G	H	Ø1	J	K	L	M	ØH	T
PC1-16	680	300	-	-	90	100	260	300	220	-	80	38	50	270	150	470	14	AT
PC1-25	680	300	-	-	90	130	260	300	220	-	80	38	50	270	150	470	14	AT
PC1-35	800	400	-	-	120	140	280	360	250	160	100	38	50	280	160	520	14	AT
PC1-45	850	440	-	-	120	150	300	400	300	180	120	38	60	310	180	560	18.5	AT
PC1-60	900	500	75	75	150	160	320	500	360	220	160	50	70	385	220	700	18.5	BT
PC1-80	1000	550	75	75	150	180	360	560	420	300	180	50	70	450	220	770	23	BT
PC1-110	1150	600	75	100	160	200	400	650	470	300	220	50	80	490	220	910	28	BT
PC1-160	1250	800	75	75	220	220	440	700	550	300	220	65	90	520	175	990	28	BT
PC1-200	1400	820	100	100	280	240	480	850	630	420	300	65	90	640	200	1130	35	BT
PC1-250	1400	820	100	100	280	240	480	850	630	420	300	65	90	640	200	1130	35	BT
PC1-260	1500	840	100	100	290	260	520	950	700	420	300	65		720	200	1130	35	BT